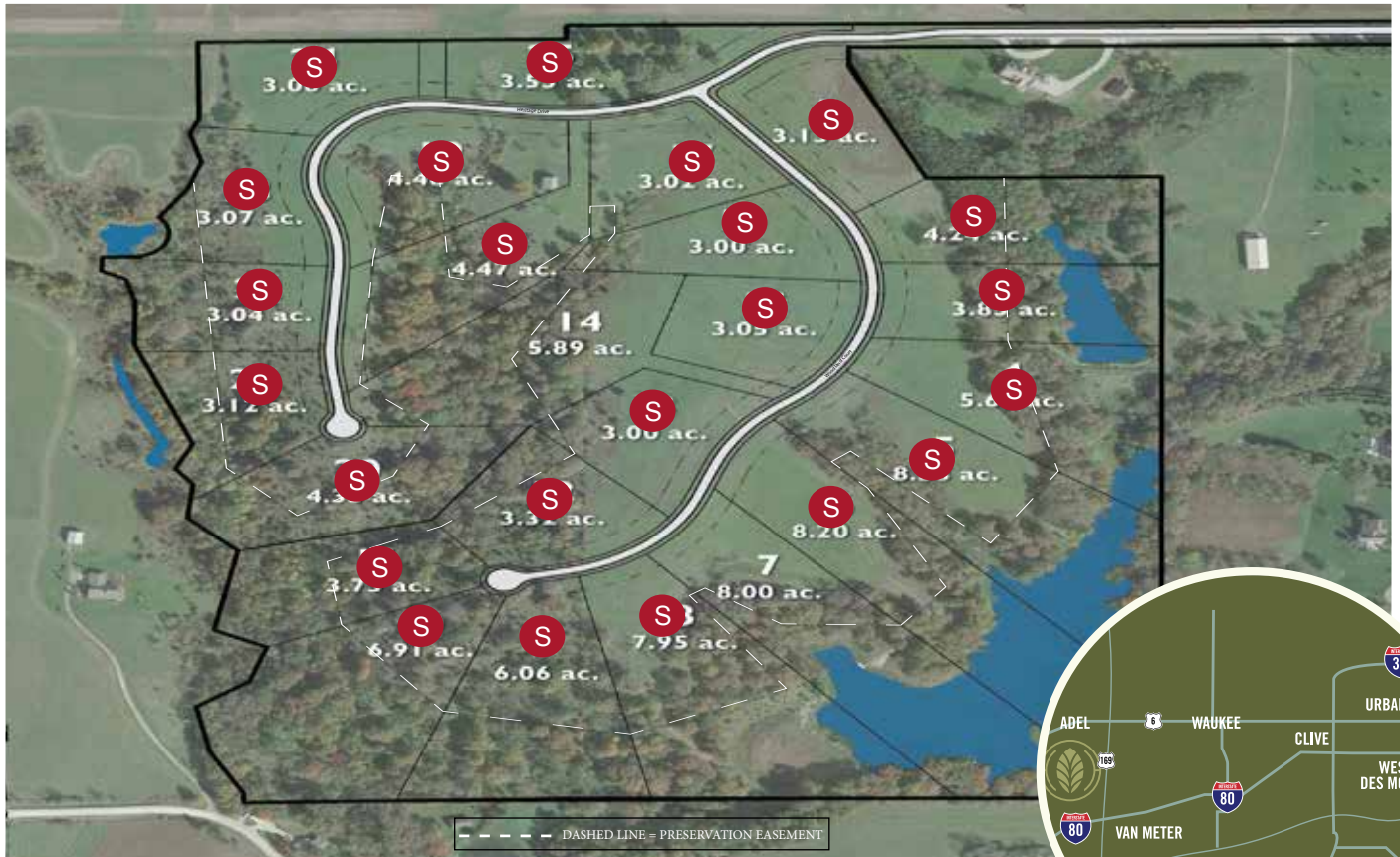


HERITAGE WOODS | NEAR ADEL, IA



**HERITAGE  
WOODS**

Welcome to Heritage Woods! Located south of Adel, Iowa on pavement off of Hwy-169, this acreage development is minutes from Interstate 80. Homeowners have the luxury of open space and the convenience of an easy 15-minute drive to West Des Moines' Jordan Creek Town Center. The exclusive 125-acre community is divided into 25 exclusive lots of various sizes. Lots are available to start home construction. Please contact Stephanie Rice for a private tour of this absolutely stunning development or for more information.

Information contained here deemed reliable but not guaranteed by Landmark Brokerage, Inc.

9550 Hickman Road // Suite 100  
Clive, Iowa 50325

Stephanie Rice  
P. 515.986.5994 F. 515.986.5996  
E. [srice@lmcompanies-inc.com](mailto:srice@lmcompanies-inc.com)

[lmcompanies-inc.com](http://lmcompanies-inc.com)



Information contained here deemed reliable but not guaranteed by Landmark Brokerage, Inc.

9550 Hickman Road // Suite 100  
Clive, Iowa 50325

Stephanie Rice  
P. 515.986.5994 F. 515.986.5996  
E. [srice@lmcompanies-inc.com](mailto:srice@lmcompanies-inc.com)

[lmcompanies-inc.com](http://lmcompanies-inc.com)



Information contained here deemed reliable but not guaranteed by Landmark Brokerage, Inc.

9550 Hickman Road // Suite 100  
Clive, Iowa 50325

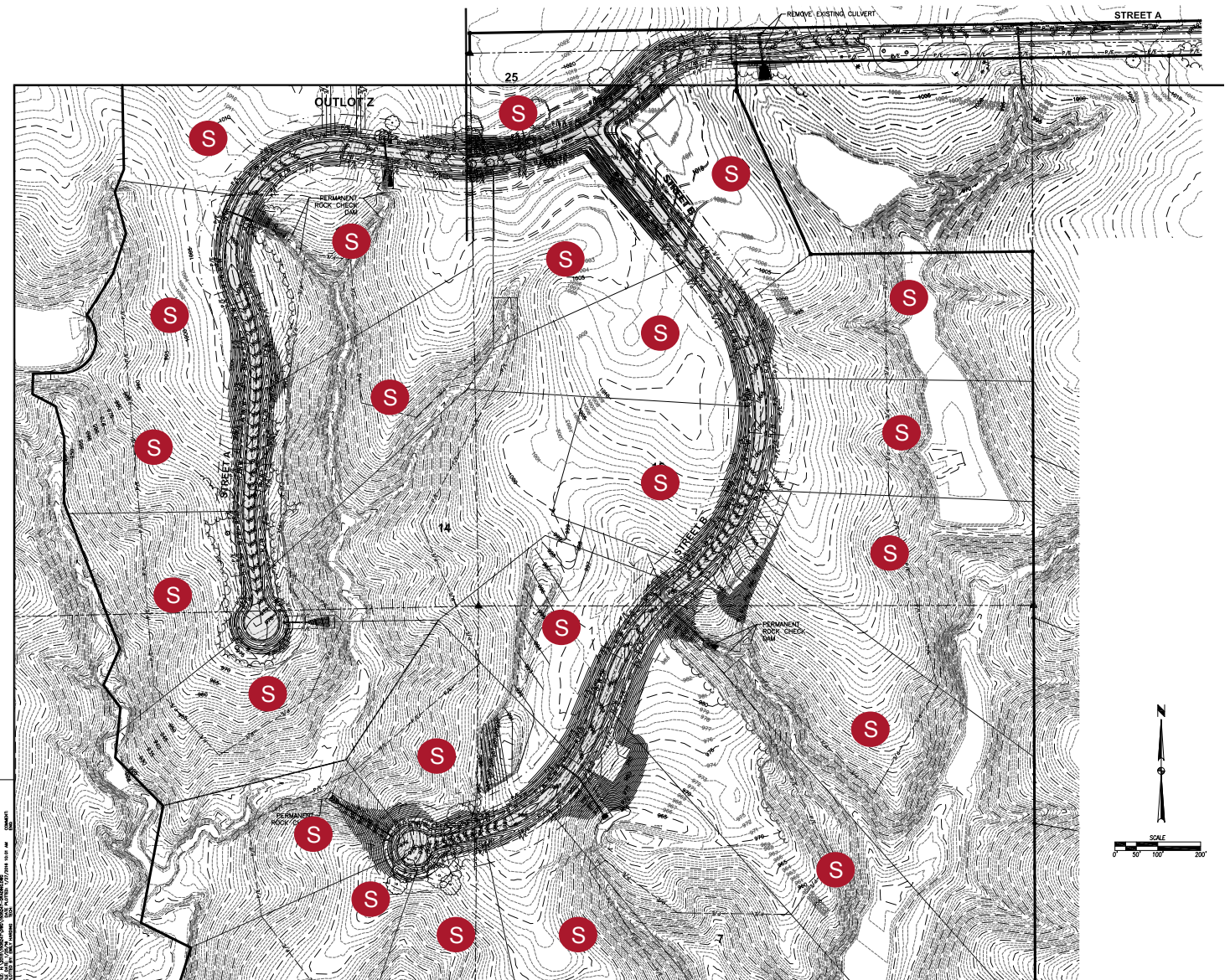
Stephanie Rice  
P. 515.986.5994 F. 515.986.5996  
E. [srice@lmcompanies-inc.com](mailto:srice@lmcompanies-inc.com)

[lmcompanies-inc.com](http://lmcompanies-inc.com)

LOT	ADDRESS	PRICE
7	Woodland Court	\$349,900
14	Heritage Drive	\$239,900

Information contained here deemed reliable but not guaranteed by Landmark Brokerage, Inc.

## HERITAGE WOODS | GRADING MAP



Information contained here deemed reliable but not guaranteed by Landmark Brokerage, Inc.

9550 Hickman Road // Suite 100  
Clive, Iowa 50325

Stephanie Rice  
P. 515.986.5994 F. 515.986.5996  
E. [srice@lmcompanies-inc.com](mailto:srice@lmcompanies-inc.com)

[lmcompanies-inc.com](http://lmcompanies-inc.com)